



Kern County Law Enforcement Foundation

www.kernlaw.org

Fall 2006

President's Message

ON THE MOVE! We are excited to announce new board members and a push to increase membership and awareness over the next two years. The Foundation has recruited some "new blood" to carry on with our organization as the longtime members start to retire. We are proud of our past achievements, but want to plan for the future with new members who are committed to our long term objectives and goals. If you will take the time to check out our new website at www.kernlaw.org, you will see our plans for growth and articles on our past achievements. We are scheduling our third annual "Law Enforcement Shoot" for April, 2007 and hope to see many new members attend.



Tom Sheets

We are also developing annual sponsorships for the shoot and business memberships at three levels in the organization. Be sure and watch the website for announcements on how your business can sponsor both. Our organization will also be producing some public service announcements on our activities, becoming a member and our awards and scholarships. We were able to get Mayor Harvey Hall and Lisa Boydston to volunteer to come back on the committee and step up our activities in this area. We also understand that one of our scholarship award winners is currently in the police academy for the Bakersfield Police Department and will announce his progress at the upcoming fall luncheon on November 2, 2006 at noon at the Doubletree Inn on Rosedale Highway.

You will notice our new design on our newsletter. We have worked with Dayna Nichols at Castle Print & Publication to redesign and increase circulation while holding costs down to what we were paying before. A special thanks to Dayna and her staff for all their help on everything we do. We will be delivering about 5,000 copies of the newsletter countywide; twice a year. As we work forward to celebrate our upcoming 20th year in existence in 2008, would you please take the time to download our application for membership on the website and join now! If you have the time; please call in to our Secretary Pauly Wren (861-7911) and reserve your seats or table at the fall luncheon, it a great time to see what we do and support local law enforcement.

If you have any further questions; all officers emails are on our site; please feel free to contact us for further information. I hope you join today and help our membership committee reach its goal of two hundred new members in the next two years. Jon Busby and Greg Sturgess; our membership chairmen, tell us that they are going to reach that goal. **JOIN TODAY.**

Today's CHP

The New California Highway Patrol

The Kern Law Enforcement Foundation is pleased to announce our fall guest speaker, Jim Abrames speaking on "Today's CHP", the new California Highway Patrol. He will also present the new video outlining new assignments that the Highway Patrol has taken on.

Assistant Chief Jim Abrames has served with the California Highway Patrol (CHP) for 21 years. He started his career working road patrol predominantly in Kern County where he lived for nine years. Through various promotions and transfers he developed expertise in commercial trucking and ultimately became the commander of the Department's Commercial Vehicle Section (CVS) in Headquarters. As the commander of CVS he acted as the Department's liaison on issues relative to the North American Free Trade Agreement, the Motor Carrier Property Permit Program, Biannual Inspection of Terminals Program, and the Motor Carrier Safety Assistance Program to name a few. He worked directly with the Federal Motor Carrier Safety Administration, International

Association of Chiefs of Police and Commercial Vehicle Safety Alliance to facilitate departmental goals relative to improved highway safety.

Assistant Chief Abrames is currently assigned to the California Highway Patrol's Central Division which encompasses the San Joaquin Valley from the Los Angeles County line to San Joaquin County line. He oversees the Bakersfield, Buttonwillow, Porterville and Fort Tejon CHP offices in addition to a variety of specialized investigative, commercial, Task Force and Air Operations personnel.

He is a 1984 graduate from California State University Sacramento where he attained a Bachelor of Arts degree in Criminal Justice. In 2005, he served as Class President and graduated from Northwestern University's School of Police Staff and Command.

We continue to provide quality law enforcement speakers to inform and educate our community on current trends in law enforcement.

The public is invited to attend; tickets and information can be obtained by calling



Foundation Secretary Pauly Wren at the Law Offices of Young & Nichols at 861-7911. You can also obtain further information on our web-site at www.kernlaw.org, on membership and activities.

What is a Background Investigation?

The purpose of a background investigation is to ensure that our members are people of the highest ethical and professional standards in order to build the best possible partnership between citizens and law enforcement.

Prior to becoming a member of the foundation a search of criminal history records, DMV records, and any other information source necessary will be done by the Kern County Sheriff's Department in order to ensure that the Foundation has members of the

highest character.

The following criteria will be used when determining the suitability of any applicant for membership in the Kern Law Enforcement Foundation.

- Multiple convictions for driving under the influence
- Exclusion for any sexual assault or child abuse convictions
- Exclusion for any felony conviction for a crime of violence
- Five year exclusion for any misdemeanor crime of violence

- Exclusion for any felony drug related conviction
- Five year exclusion for any misdemeanor drug conviction
- Exclusion during the time of probation or parole for any offense
- Five year exclusion of any crimes against property
- Ownership, partnership or employment by business that is considered offensive to law enforcement standards (strip clubs, medical marijuana store, drug paraphernalia stores, etc.)

New Board Members



Michael Larson

Michael Larson was born in King City, California. He moved to Bakersfield when he was thirteen years old and attended local schools. He married after he graduated from Foothill High School and just celebrated his 15th anniversary with his wife Leslie.

Michael is best known for his genuinely warm personality and interest he takes in members of the community. This personality trait is what has led to his success in Sales. His career in Sales started in 1993 when he joined Bakersfield Cellular (which later became Bell South) in their inside sales department. As the wireless telecommunications market grew, Michael was offered a promotion from inside sales to the position of Business-to-Business sales then after two years he was offered an account executive position with GTE wireless working for their outside sales department. Michael received numerous awards and recognition for being 1 of their top 10 producers during his tenure there.

In 2000, Michael left the telecommunications industry and joined CINTAS as a Sales Associate to support new, business-to-business account development in their Uniform Sales Division. In 2002, Michael joined Pitney Bowes as a Major Account Executive. He was accountable for the development of the customer relationship and sale of Global Mailing Systems products to assigned customer accounts that are large in scope. He developed strong relationships with their accounts and was looked to as the subject matter expert on mail handling and document messaging solutions. In 2003 he was the No. 1 Sales Representative for the West Hills Division and was then promoted to the position of Assistant Sales Manager.

In 2005, Michael received his real estate license and joined the mortgage division of Karpe Real Estate Center. He has helped many Bakersfield families reach their goal of homeownership. He has been an asset to Karpe's mortgage department as their only bilingual loan agent and was recently featured in the "Homes" magazine as Top Sales Agent for Karpe Mortgage.

Michael is currently attending University of Phoenix to obtain a degree in Business. We welcome

Mike to our board and will assign him to the membership and finance and fundraising committees. Welcome aboard.



Angela Barton

Angela Barton was born & raised in Bakersfield California, where she attended the local schools. Angela comes from a large family. She has four siblings including an identical twin. She currently lives in Bakersfield with her husband Matthew & their six children. Together they enjoy raising their children whose ages range four to seventeen years old.

Being a Bakersfield native, she has many ties to her community. Angela's family owned & operated a local landmark restaurant in the Rosedale area where she began working around the age twelve. This would be the beginning of her career, working with friends, family & community leaders.

Angela has always been a hard and honest worker. She began her professional career in media in 1995 working for a group of local radio stations as a Sales Representative. She would later transition to do sales and marketing for English and Spanish radio stations in the Los Angeles & Orange County area. Around 1998 she accepted a position for the local ABC television affiliate here in Bakersfield as Sales Representative. She would later accept a position for the NBC affiliate KGET TV-17 in Sales & Marketing and has now found her home. Angela enjoys her career as

a Marketing Specialist working with local & regional businesses. She finds great satisfaction being able to offer her services and products that contribute to successful business growth. Working for KGET TV-17 who has a great presence in the community, also gives Angela a great sense of pride to work for them.

Angela is looking forward to many more years of being a part of service and leadership in our community.



Greg Sturges

Greg Sturges, native to Kern County, was born in 1966 and raised in Frazier Park California. Greg's involvement with law enforcement began at an early age, sometimes on the wrong end of the law.

In the early 1970's with the care and concern of Kern County Sheriff Deputy Tom Sheets; Greg joined his Frazier Park baseball team and moved towards a more rewarding and positive side of life and law enforcement. As a young man, and with that direction, Greg became heavily involved in the Kern County Sheriff Department Explorer Program. This program provided Greg with great pride and satisfaction. His first job was with the Kern County Sheriff's Department as a Correctional Officer in the main jail facility. Although Greg's career path led him away from law enforcement, it did not leave his heart. Greg enjoys deep and committed relationships, with those that include: The Kern Coun-

ty Sheriff's Department, Bakersfield City Police Department, The California Highway Patrol, Judges and Lawyers.

Greg, President and CEO, founded CommWorld of Kern County, Inc. 1991. CommWorld of Kern County, Inc. provides telephone systems and computer networking systems. Greg and his wife Tamra have been married 20 years and both run the business with a hands on approach with both business and their customers. Greg and Tamra, have one son, Devery Sturges who is a senior in High School. Devery has a passion for music and is eager to attend college, to pursue a career in music.

Greg considers himself both lucky and fortunate to have crossed paths with Sheriff Deputies' Tom Sheets, Dave Merritt and Frank Williams and being mentored by them; and now being able to give back to law enforcement as a member of the foundation board and co-chair of the Membership committee. He looks forward to a long term commitment to the organization and its goals. Welcome aboard.



Jon Busby

Raised locally, Jon first entered the Real Estate Industry as a Real Estate Loan Officer. This lending background from 1986 to 1990 educated him to find the best loans and close those difficult escrows. Lending developed these extremely valuable negotiating skills he uses today. This means

a better Purchase Price to you, the Buyer, and possibly a lower mortgage payment.

Since joining Watson Realty in 1991, Jon has continually been recognized as one of Watson Realty's top agents. Long hours, a positive attitude, and strong work ethic equal Customer Satisfaction. For the last nine years Jon has qualified for the "Circle of Excellence" award, and in 2000 Jon won the Marketplace Office "Service Excellence Award" for outstanding service to his clients.

The people of Bakersfield and Kern County have honored Jon for the past six years running by voting him "Best of the Best" in The Bakersfield Californian's annual "Readers Choice Poll". Jon has learned that in today's world of specialization, when Real Estate agents try to be all things to all people, their clients don't receive the level of service that they deserve. Jon has invested money and countless hours developing a team of specialists. This unique and successful team mirrors Jon's winning attitude. Jon's team is capable, licensed, and has over fifty-two years of combined Real Estate and Marketing experience. Jon and his team's positive attitude and strong work ethic have led to unequalled success.

1991 - 2005 Watson Realty Co. Since joining Watson Realty Company, closed sales have qualified me at the top of Watson prestigious "Circle of Excellence".
 1998 Most closed transactions, 133 transaction totaling 18.1 million
 1999 Over 150 Transactions totaling more than 19.5 million
 2000 172 Transactions totaling more than 24.5 million & recipient of the Watson Customer Service Award
 2001 158 Transactions totaling more than 24.5 million & recipient of the Watson Customer Service
 2002 240 Transactions for more than 39.1 million Watson Circle of Excellence
 2003 264 Transactions, 46.24 Million Dollars in sales, voted Best of the Best for the 6th year in a row
 2005 - Current Left Watson Realty Co. to joined Bakersfield Premier Realty. Located at 10000 Stockdale Highway Ste 250 (661) 410-SELL (7355)

Retired Officers Dreams....

Submitted By Retired KCSO Sgt. Dan Garner

This says it all.....
 When a good officer leaves the line, and retires to a better life many are jealous, some are pleased and yet others who may have already retired, wonder. We wonder if he (she) knows what they are leaving behind, because we already know. We know for example that after a lifetime of camaraderie that few experience, it will remain as a longing for those past times. We know in the law enforcement life there is a fellowship, which lasts long after the uniforms are hung up in the

back of the closet. We know even if he throws them away, they will be on him with every step and breath that remains in his frame. We also know how the very bearing of the man speaks of what he was and in his heart still is. These are the burdens of the job. You will still look at people suspiciously, still see what others do not see or choose to ignore and always will look at the rest of the law enforcement world with a respect for what they do, only grown in a lifetime of knowing. Never think

for one moment you are escaping from the life. You are only escaping the "job" and we are merely allowing you to leave "active" duty. So what I wish for you, is that you ease into retirement, but in your heart never forget for one moment that "Blessed are the Peacemakers for they shall be called children of God," and you are still a member of the greatest fraternity the world has ever known. Author unknown

Editors Note: We have not for-

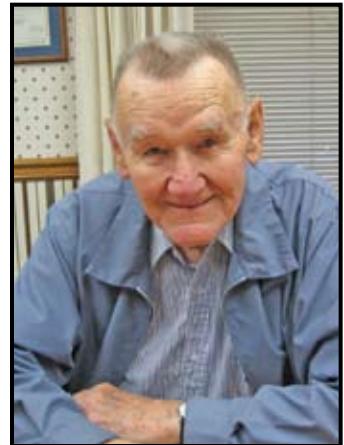
gotten all of you in retirement and would like you to join our organization, which supports all local law enforcement. We have given over \$300,000 grants, awards, equipment and scholarships since 1988 when we began. We have created a special "retired officers membership" for \$50.00 a year, contact any board member or officer for an application. Of course the background should be a worry, please join us and continue to support local law enforcement.

Brief History OF THE Kern County Law Enforcement Foundation

The KERN COUNTY LAW ENFORCEMENT FOUNDATION was born eighteen years ago on June 10, 1988 as the "KERN COUNTY SHERIFF'S ADVISORY COUNCIL." It was the fulfillment of a campaign promise made by former Sheriff John Smith to create such an organization.

Its purposes are to promote efficient law enforcement by providing assistance and support to the various police agencies of Kern County whether federal, state or local, to provide scholarships for students who aspire to become involved in a law enforcement career, and to recognize outstanding accomplishments of law enforcement officers and lay citizens who, at risk to themselves, have courageously taken action to resolve a law enforcement emergency.

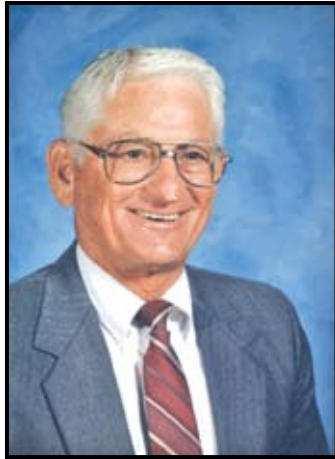
Bill Dolan, a former Kern County under sheriff and retired Arvin High School teacher, now 94 years of



Bill Dolan

age as of his last birthday, served two years as its first president and is still on the Board of Directors. Succeeding presidents were Jim Garner, then owner of Bakersfield Envelope, one year, John Woltz, of the BIA Insurance Agency, two years, Ken Reed, owner of the Alley Cat, two years, Tom Sheets, administrator of the Young Nichols Law Firm, two years, Harvey Hall, of the Hall Ambulance Company and present Mayor of the City of Bakersfield, two years, Frank Williams, retired commander of the Kern County Sheriff's Office, and three years, Randy Boggs, retired police detective of the Bakersfield Police Department.

With strong support from Sheriff Smith, the Advisory Council got off to a great start. By the end of the second year memberships had grown to more than three hundred, many of them brought in by Sheriff Smith personally. During its brief history the organization has undergone two name changes. Early, during the administration of Sheriff Carl Sparks and at his request



Frank Williams

the Council's name was changed to "The Kern County Sheriff's Foundation".

During the presidency of Tom Sheets and with the approval of Sheriff Sparks the Board of Directors expanded the scope of the Foundation so that it might serve the needs of all law enforcement agencies in Kern County without the restriction of ties to any one department. The Board of Directors was aware that the smaller departments in the county, as well as the Bakersfield Police Department, and the California Highway Patrol also had unbudgeted needs. The Board



Carl Sparks

also hoped that by expanding its service, it might be able to expand its membership base sufficiently to cover the additional requests for donations.

The first major and very successful contribution was a drug sniffing dog by the name of Murphy, valued at \$5,000.00. During Murphy's career, he earned a sizable sum in forfeitures of drug money and equipment which his buddies on the Sheriff's Drug Enforcement Task Force were able to locate and seize as a result of his trained sniffer. Murphy was such a celebrity in his heyday that he was an honored guest at several of the Council's general meetings. His reputation was so great, that at

one meeting, the restaurant manager at the Red Lion asked Murphy's handlers to please keep him out of his employees' locker room. Jokingly, of course? Murphy retired in April 1996 after an illustrious career in narcotics enforcement with the Sheriff's Department.

He was a trained narcotic detector and was the first major gift to the department by the Advisory Council. When asked what plans Murphy had for his retirement, his handler, Deputy Bruce Saunders said that he had purchased Murphy from the department and that Murphy would spend much of his time laying about in Saunders' back yard.

According to Saunders, Murphy proved to be an excellent investment. During his final four



years, according to department records, Murphy participated in two hundred seventy six searches for narcotics which resulted in the arrest of one hundred eighty suspects. Drugs with a street value of \$5,841,393.00 were seized and \$36,803.00 in cash was forfeited. In one ninety day period in 1991 with handler Deputy Al Crespo, Murphy was involved in twenty three searches and the seizure of \$1,023,640.00 of narcotics and \$84,430.00 in U. S. currency. Murphy was also involved in the seizure of vehicles with a forfeiture value of approximately \$80,000.00.

On another occasion, The Berry Petroleum Company at Taft gave the by then, Sheriff's Foundation, another opportunity to make an unusual dog related contribution. Berry Oil had discontinued use of a large house trailer which had been converted into a field office. Berry offered it to the Sheriff's Office at no cost, but on a come and get it basis. The Sheriff's Office was looking for an office for a canine training center that it was preparing at its Norris Road location. The department had no funds to pay for the trailer's removal to the Sheriff's proposed dog training center. Two Foundation Board Members, Bobby Shain and Doug Zimmerman, drove out on their own time to examine the building, which was located near Taft, to determine what was

needed to move it. They then arranged to have the building moved at a cost of a bit over \$4,000.00 which was funded by the Foundation. Old River Sod contributed the sod for ground cover which was installed by trustees from the jail under the supervision of sheriff's officers. The contribution of the sod was a major individual gift to the project. The Foundation made other donations for doors, locks and other necessities.

The Foundation's Board of Directors took a special interest in this project and after its completion held its July, 1999 luncheon meeting at the Sheriff's Dog Training Facility. Sheriff's Sergeant, Wim Leyder, commander of the unit, welcomed the group and reported that the facility was in daily use. A great deal of time and effort went into the making of this first class facility, which Leyder said is the envy of the Kern County Police Community.

The Foundation has received requests for many other useful items and services. The list includes \$22,000.00, which is the largest gift thus far, for an automobile to the Sheriff's Dare Program; night vision glasses to the Sheriff's Search and Rescue; a substantial shared contribution with the Farm Bureau for a computer system for use of the Rural Crime Detail. Another shared contribution was made to the Kern River Valley Search and Rescue Team for fifty percent of the cost of an inflatable rescue boat to replace one that had been wrecked and destroyed. The other half of the cost was raised by a group of Kern Valley businessmen. Other examples were \$2,000.00 for Sheriff's Swat Team flak jackets, \$2,500 for a lap top computer for the Sheriff's Drug Enforcement Detail to prepare search warrants in the field to speed up preparation for drug busts. A STARX computer for the Sheriff's command center, \$494.35 for 20 jackets for the Sheriff's Gang Suppression Unit, and \$1,649.00



Harvey Hall

for two global position receivers for Search and Rescue. This is a partial list, but is a good example of the variety of needs that the Foundation is called upon to fill.

In May 1998 Tom Sheets completed his second term as president of the Foundation, during which time he spearheaded the expansion of the Sheriff's Foundation into the new Kern County Law Enforcement Foundation. Sheets said that he wanted the expansion so that the Foundation could respond to the needs of any county law enforcement agency unrestricted by ties to any one department. "We have had a great relationship with the Sheriff's Department, and it will continue to be closely associated with the Foundation."

Harvey Hall became the first president of the Foundation under its present name, KERN COUNTY LAW ENFORCEMENT FOUNDATION.

Over the past thirteen years the Kern County Law Enforcement Foundation has proudly sponsored over \$20,000 in scholarships to deserving students in Kern County. To qualify for the program, the student must be enrolled as a full time student in a Law Enforcement or Criminology program at Bakersfield College, Cal State University Bakersfield, Taft College or Cerro Coso College. The student must maintain a 3.0 grade-point average, have lived in Kern County for the past five years and plan on working in a local law enforcement organization.

Each scholarship awarded is a total of \$4,000 paid each semester or quarter based on proof of eligibility. Past recipients have been high school students entering college or students already attending college.

This program is exceptionally rewarding to our Board of Directors, reinvesting in our future Law Enforcement leaders is a goal of our Foundation.

If you know a student that meets our criteria, please contact Sharon Scoggins of Hall Ambulance Service, Inc (661) 322-1625 - or any Board Member for additional information. We look forward to introducing you to the recipient of our 2006 award in our Spring Newsletter.

Now, nine years after completing his first two terms, Tom Sheets has agreed to become president for the third time and is now in his fourth month of his second administration. He has been a member of the Board of Directors since its organization eighteen years ago.

For a membership application, go to our website at www.kernlaw.org and download. We encourage your participation.



Kern County Law Enforcement Foundation

Annual Fall Luncheon

Double Tree Inn
Rosedale Hwy. and 99

November 2nd, 2006 Doors Open at 11:30

Public Welcome Asst. Chief Jim Abrames Speaker on TODAY'S CHP.

For Tickets or Reservations Contact Pauly Wren at 861-7911, ext 110

Kern County Law Enforcement Foundation

P.O. Box 1249 Bakersfield, CA 93302-1249
661-835-5040 • www.kernlaw.org

PRESORTED
STANDARD
U.S. POSTAGE
PAID
Bakersfield, CA
Permit No. 758

President - *Thomas L. Sheets* **Secretary**- *Pauly Wren*
Vice President - *Lisa Boydston* **Treasurer** - *Dale St. Claire*

Board of Directors

Randy Boggs *Dale St. Claire*
Lisa Boydston *Greg Sturges*
Jon Busby *Frank Williams*
William R. Dolan *Pauly Wren*
Dr. John Gruber

Harvey Hall
Arnold Johansen
Wayne Ketcherside
Michael Larson
Dave Merritt
Stan Moe
Arthur P. Shain
Thomas L. Sheets
Mary K. Shell

Members at Large

Angela Barton
Chief Charlie Fivecoat
Commander Dave Nelson
Walter G. Morton

Ex-Officio Members

Edward R. Jagels
Chief Bill Rector
Sheriff Mack Wimbish